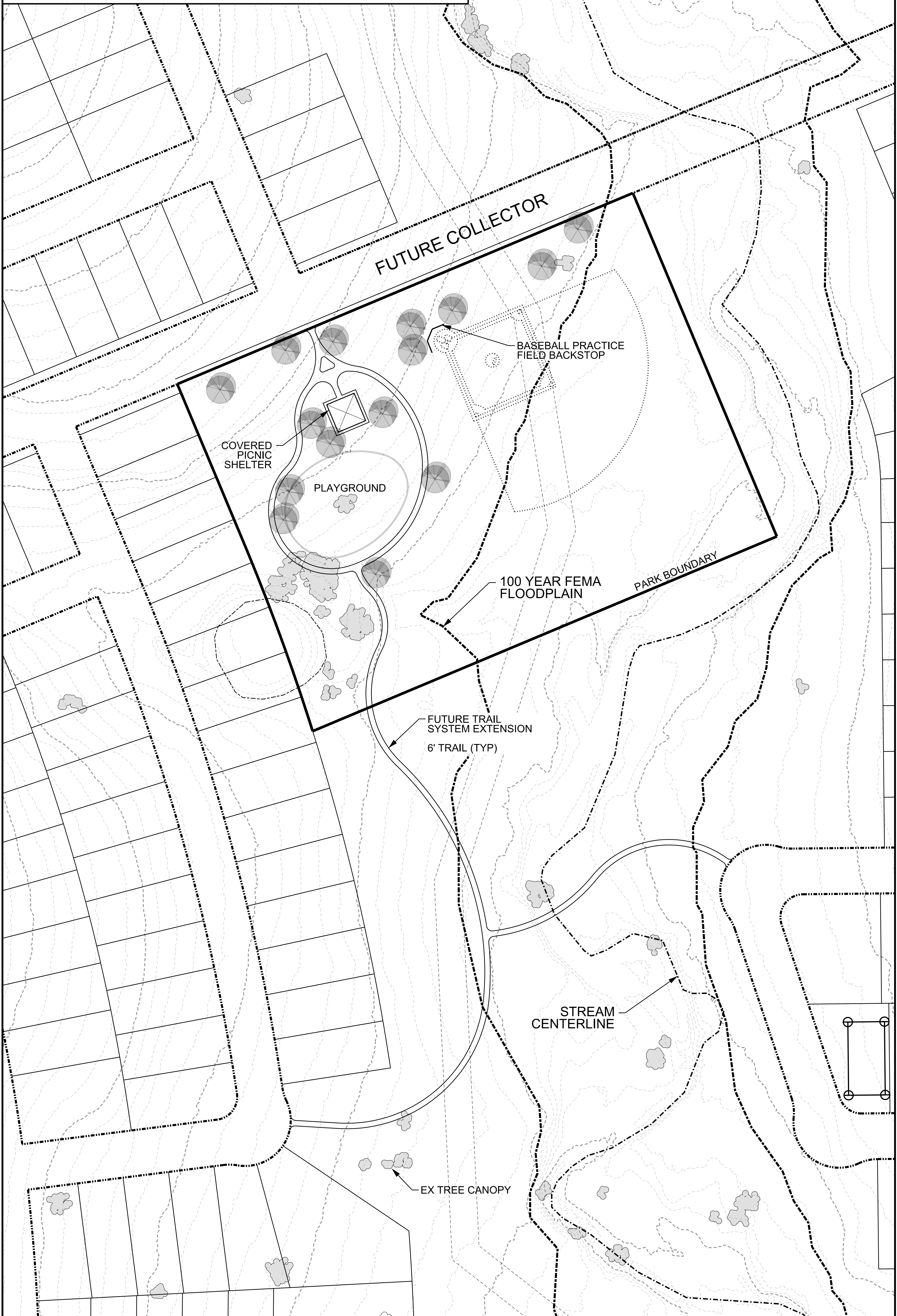
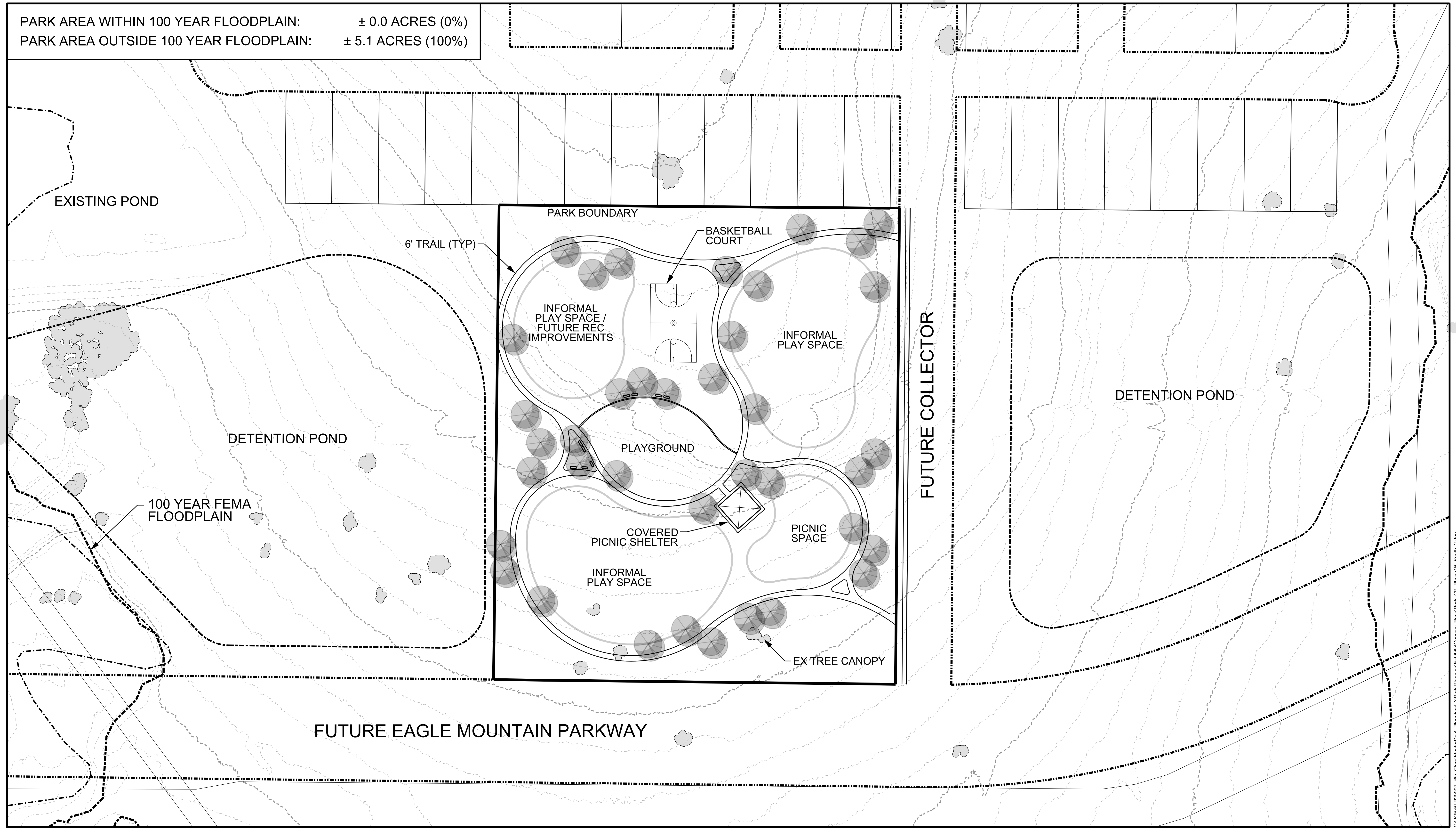


PARK AREA WITHIN 100 YEAR FLOODPLAIN: ± 2.1 ACRES (41%)  
 PARK AREA OUTSIDE 100 YEAR FLOODPLAIN: ± 3.0 ACRES (59%)

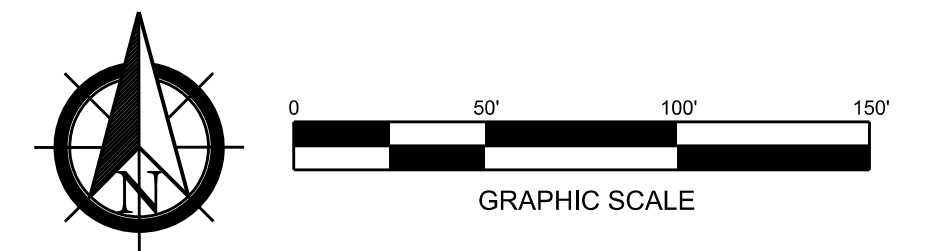


PARK AREA WITHIN 100 YEAR FLOODPLAIN: ± 0.0 ACRES (0%)  
 PARK AREA OUTSIDE 100 YEAR FLOODPLAIN: ± 5.1 ACRES (100%)



# Public Park CP - Phase 1B South

± 5.1 Acres | October 2021



G:\DBLP20007\_100\_CitroMasterDev\_Planning\LA\Park\_Planning\Exhibits\Concept\Plans\Park\_CP\_Phase1B\_South\_2.dgn



PARK AREA WITHIN 100 YEAR FLOODPLAIN: ± 0.0 ACRES (0%)  
 PARK AREA OUTSIDE 100 YEAR FLOODPLAIN: ± 11.0 ACRES (100%)

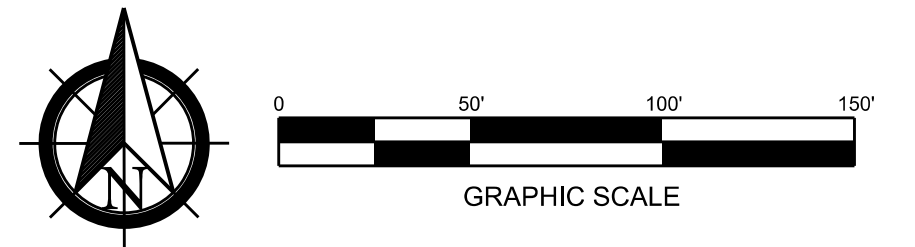
PARK AREA WITHIN 100 YEAR FLOODPLAIN: ± 0.0 ACRES (0%)  
PARK AREA OUTSIDE 100 YEAR FLOODPLAIN: ± 5.2 ACRES (100%)

BONDS RANCH ROAD



# Public Park CP - Phase 1C

± 5.2 Acres | October 2021



GS:\DBLP20007\_Rec\_Civrol\MasterDev\_Planning\LA\Park\_Planning\Exhibits\Concept\_Plans\Park\_CP\_Phase1C\_2.dgn